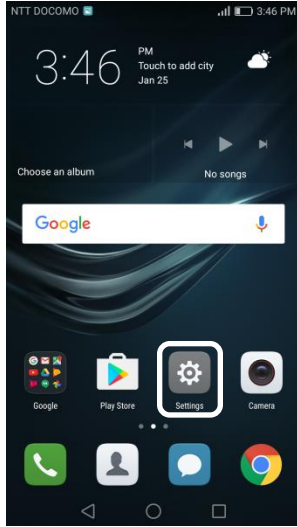
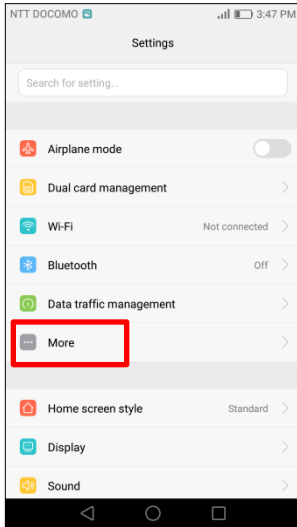


Should your smartphone be reset and you need to enter APN settings again, please refer to this guide.

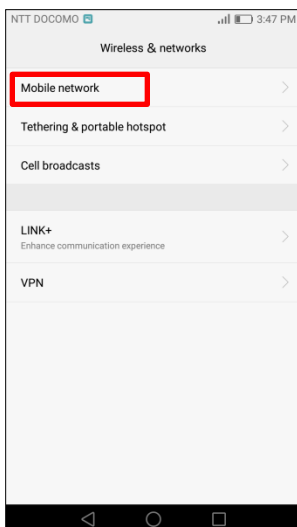
1. On the Home screen, tap Settings.



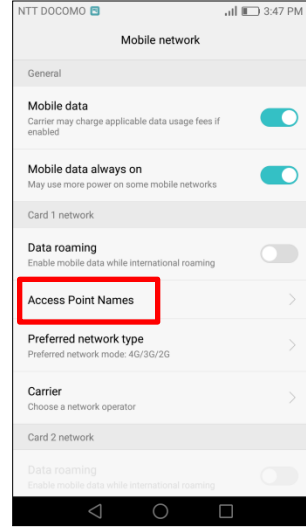
2. Tap More in the Settings menu.



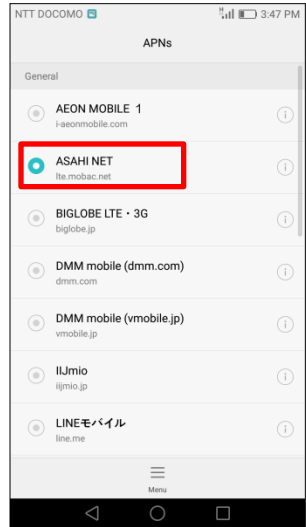
3. In the Wireless & networks menu, tap Mobile network.



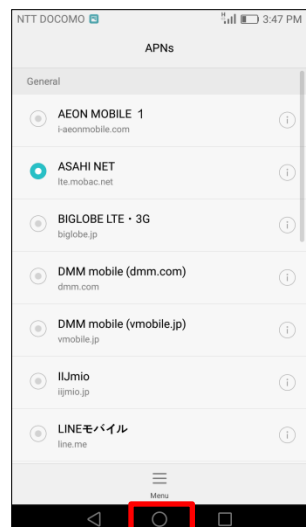
4. Tap Access Point Names.



5. Select ASAHI NET (lte.mobac.net).

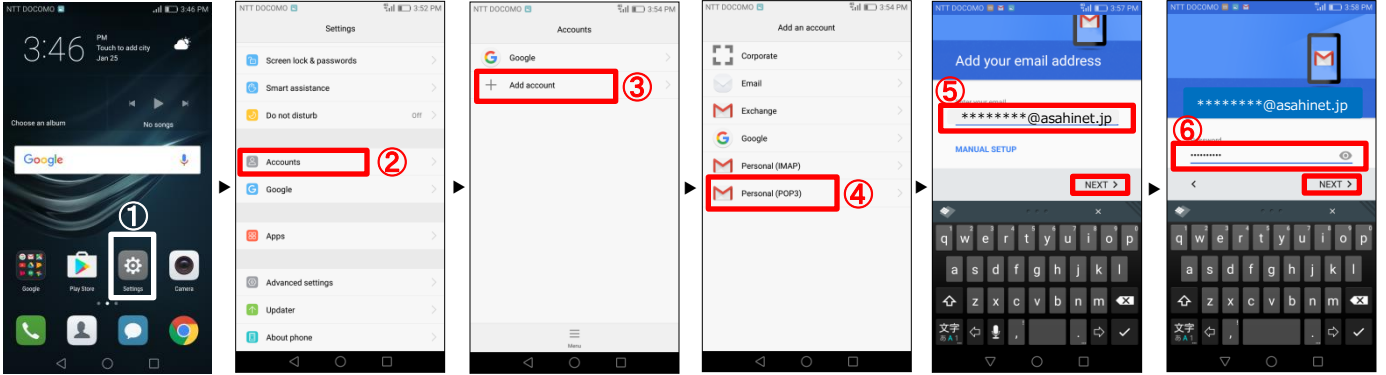


6. Tap the Home button. The settings are complete.

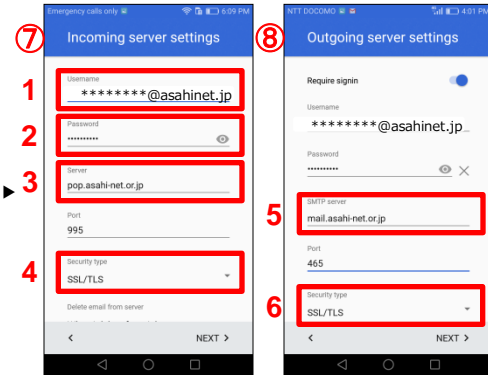


To use Asahi Net email on the HUAWEI P9lite, please follow these settings.

1. Using Gmail, enter your Asahi Net email address, password and the server names.



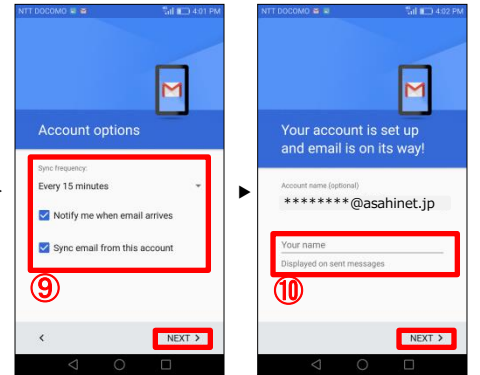
- ① Tap **Settings**.
- ② Tap **Accounts**.
- ③ Tap **Add account**.
- ④ Tap **Personal (POP3)**.
- ⑤ Enter your Asahi Net email address, tap **Next**.
- ⑥ Enter your Asahi Net password, tap **Next**.



- ⑦ Enter the **Incoming server settings**, as shown in the Chart.
- ⑧ Enter the **Outgoing server settings**, as shown in the Chart.

Chart

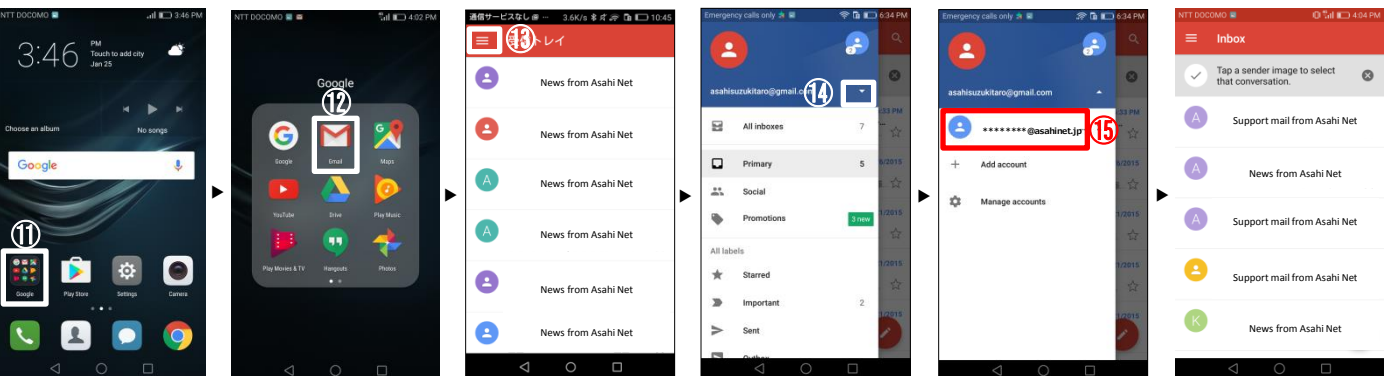
1	Username	Asahi Net ID
2	Password	Password for the Asahi Net ID
3	Server	pop.asahi-net.or.jp
4	Security Type	SSL/TLS
5	SMTP Server	mail.asahi-net.or.jp
6	Security Type	SSL/TLS



- ⑨ Select options, tap **Next**.
- ⑩ Enter your name, tap **Next**.
* To abbreviate the name, just tap **Next**.

Go to ⑪

2. Using Gmail, set your Asahi Net account.



- ⑪ Tap the **Google** app folder on the Home screen.
 - ⑫ Tap **Gmail**. Your Asahi Net email will appear.
 - ⑬ Should your email not appear, tap the upper-left menu bar.
 - ⑭ Tap the upper-right ▼ icon.
 - ⑮ Tap the Asahi Net email account you created
- Your email will appear.

The Gmail settings for your Asahi Net account are complete.