

Setup Guide

Speed Wi-Fi NEXT

W01



Getting Ready

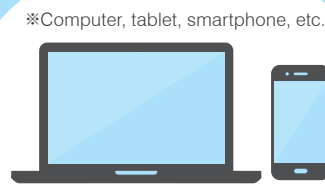
Remove ① and ② from the packaging. Have your own device to hand.



① W01 unit

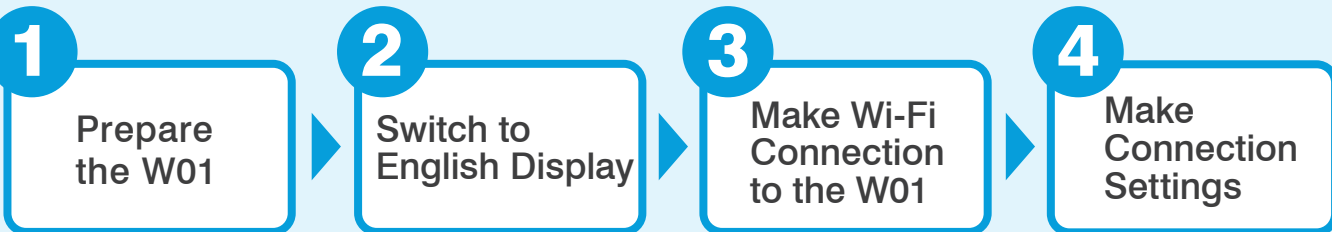


② au Micro IC card



③ Your own device
(Wi-Fi Capable)

Steps to making settings



3 Make Wi-Fi Connection to the W01

A PC (Windows 8) Wi-Fi connection method

If using a tablet or smartphone, see the reverse of this sheet.

A-1
From the **Start** screen, select **Desktop**, and then click the network icon (task tray).
The Desktop shown on the Start screen.

Network icon.

A-2
In the **Networks** list, find a name (SSID) starting **W01**- then click **Connect**.

① Select **W01-xxxxxxx**.
② Click **Connect**.

A-3
Refer to the right-hand **How To Confirm The Network Key** chart and then, at the **Enter the network security key** prompt, enter the network key. Click **Next**.

How To Confirm The Network Key

- Gently press the W01's **POWER** button to turn it on, then unlock the display to see the Home screen.
- On the Home screen, tap **About**.
- Tap **Next**, then **Manual Settings** which allows you to see the SSID and password.
- The password displayed is the **Network Key** you need to enter into your device.

A-4
When asked **Do you want to turn on sharing between PCs and connect to devices on this network?** Select **Yes**, **turn on sharing and connect to devices**.

If the status of the **W01-xxxxxxx** connection in the **Networks** list is **"Limited"** then settings to this point are complete.

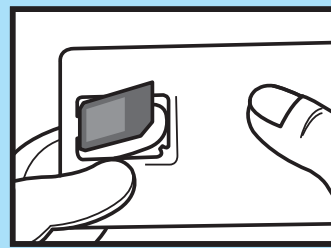
Please continue to the reverse side for

4 Make Connection Settings

1 Prepare the W01

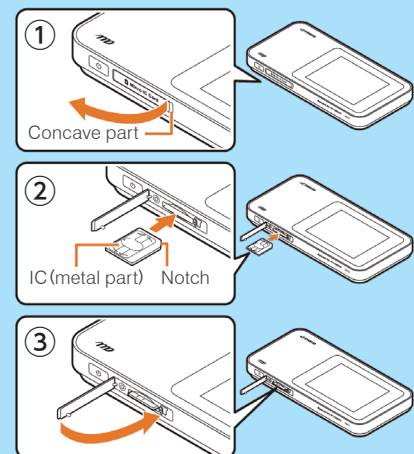
1. Remove the IC card from the card holder.

As shown in the diagram, remove the au Micro IC card from the card holder.



2. Insert the IC card into the W01.

- Open the IC Card slot cover of the W01 unit and
- Insert the au Micro IC Card with its metal side down into the slot until it clicks into position.
- Press the slot cover back into position.



3. Charge the W01, and then turn it on.

After charging up the W01 unit, hold down its power button for up to 3 seconds until it turns on.



2 Switch to English Display

- In the Home screen of the W01 unit, tap the green **設定** (Settings) button.
- Tap the **システム設定** (Tools) button.
- Tap the **言語** (Language) button.
- Select **English** and then tap . The menus will turn into English.

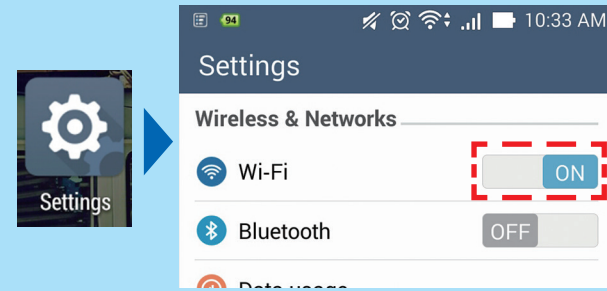
3 Make Wi-Fi Connection to the W01

If using a PC, please see the reverse of this sheet.

B Tablet or smartphone (Android) Wi-Fi connection method

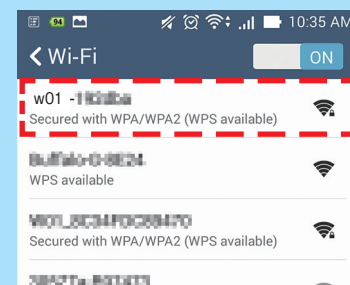
B-1

In the **Settings** menu, under **WIRELESS & NETWORKS**, make sure **Wi-Fi** is ON.



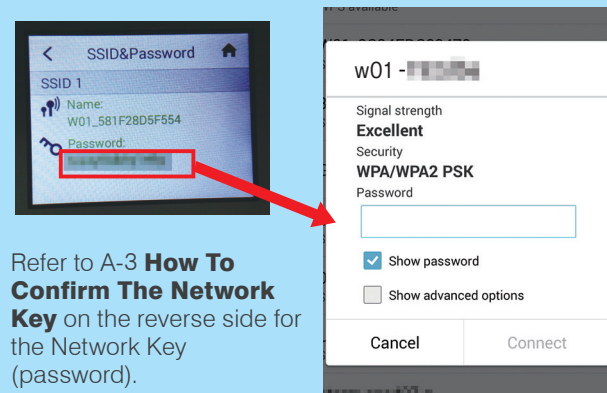
B-2

Select the network name starting **W01-**.



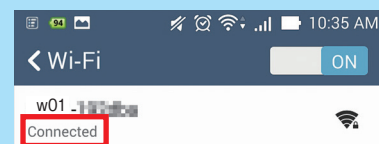
B-3

Refer to A-3 **How To Confirm The Network Key** on the reverse side and enter the Network Key in the **Password** field, then tap **Connect**.



B-4

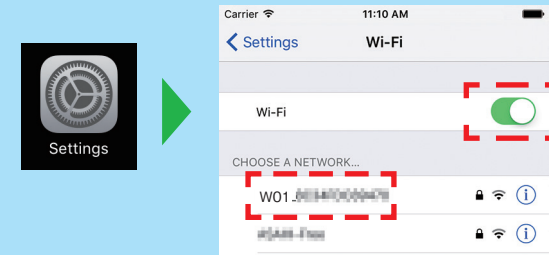
If the status is **"Connected"** then settings are complete.



C iPhone / iPad (iOS) Wi-Fi connection method

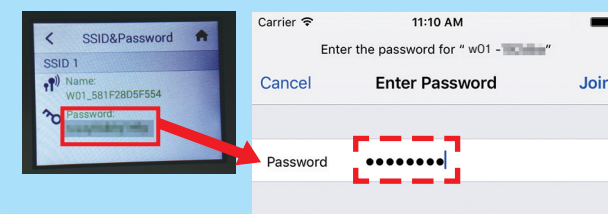
C-1

Select the **Settings** icon, and then tap **Wi-Fi**. Turn Wi-Fi ON, and then select the network name starting **W01-**.



C-2

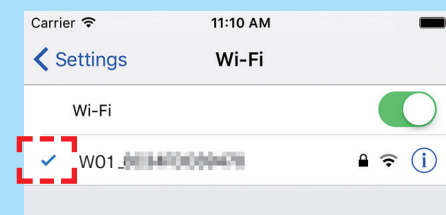
Refer to A-3 **How To Confirm The Network Key** on the reverse side and enter the Network Key in the **Password** field, then tap **Connect**.



Refer to A-3 **How To Confirm The Network Key** on the reverse side for the Network Key (password).

C-3

If the **W01-xxxxxxx** connection has a checkmark beside it then settings are complete.

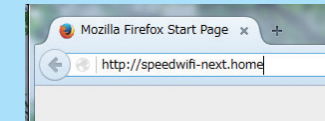


Please continue to **4 Make Connection Settings**

4 Make Connection Settings

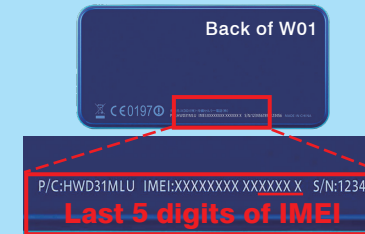
Step 1

Open a Web browser and in its address bar enter **http://speedwifi-next.home** and then press the **Enter** key.



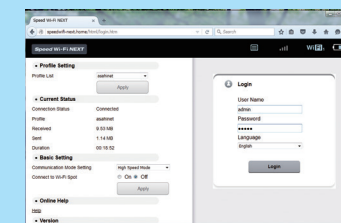
Step 2

The Login screen will appear. Enter **admin** for the User Name①. For the Password, enter the last 5 digits of the IMEI shown on the back of the W01②. For the Language, choose English③. Select **Login**④.

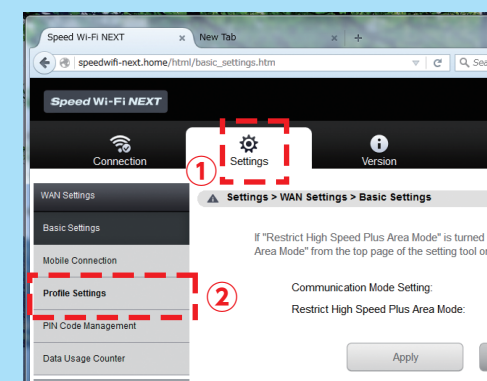


Step 3

The Speed Wi-Fi NEXT setting tool will appear.
*To make the settings with a iPhone or smartphone, please choose PC View at the bottom of the screen.

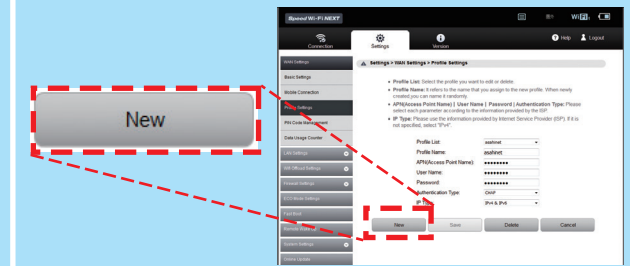


To complete the profile settings, click **Settings** in the upper part of the screen ① and then select **Profile Settings** ②.



Step 4

In the **Profile Settings** screen, select **New**.



Step 5

In the fields, enter the data shown in red below, then click **Save**.

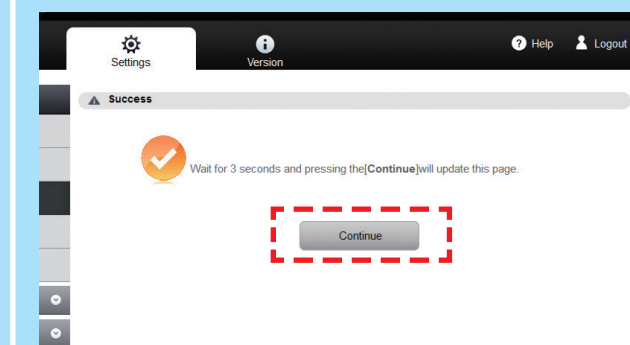
Profile Name: *1	asahinet
APN(Access Point Name):	wx2.d.asahinet.jp
User Name: *2	d@wx2.d.asahinet.jp
Password:	0000
Authentication Type:	CHAP
IP Type:	IPv4

*1 For a Fixed IP address, enter **wx2.f.asahinet.jp**.
*2 For a Fixed IP address, enter **f@wx2.f.asahinet.jp**.



Step 6

The screen show below will be displayed. Wait about 3 seconds then click **Continue**.



Please wait about 5 minutes before using the device. The settings are now complete

Should you need assistance, please contact our English support line.

03-6631-0861 10am to 5pm, Monday through Friday.
For calls from a NTT landline in Japan 0120-577-135

