

Setup Guide

Speed Wi-Fi NEXT
W04

Getting Ready

Remove ① and ② from the packaging. Have your own device to hand.



① W04 unit

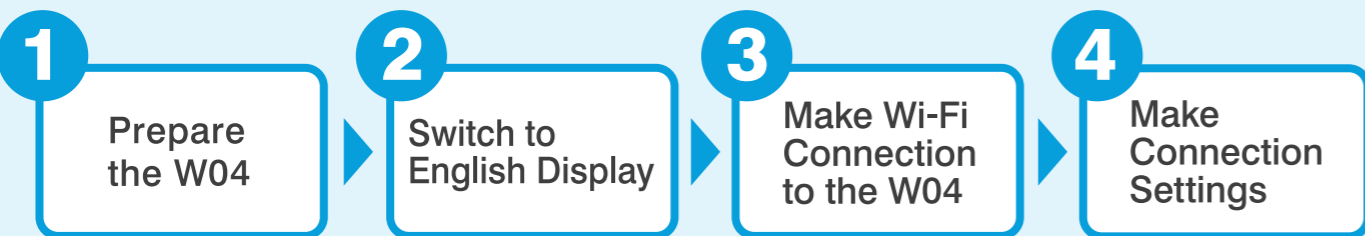


② au Micro IC card



③ Your own device
(Wi-Fi Capable)

Steps to making settings



3 Make Wi-Fi Connection to the W04

A PC (Windows 8) Wi-Fi connection method

If using a tablet, smartphone, etc, please see the back of this sheet.

A-1

On the **Start screen**, select **Desktop**, then click on the network icon in the lower, right-hand part of the System Tray (task bar).

The **Desktop** icon shown on the **Start screen**.

The **Network** icon.

A-2

In the **Networks** list, find the network name (SSID) starting with **W04_**, then click **Connect**.

① Select **W04_XXXXXXXXXX**.

② Click **Connect**.

A-3

Enter the **Network Key** at the **Enter the network security key** prompt, then click **Next**.

※ To confirm your **Network Key**, refer to the **How To Confirm The Network Key** guide on the right.

How To Confirm The Network Key

- Briefly press the W04's Power button to turn it on. Swipe up to unlock the display and see the Home screen. ※ If the "Easy settings" screen appears, please select Go to Home.
- On the Home screen, select **About**.
- Next, select **SSID&Password**.
- Refer to the displayed "name" and "password", which shows your W04's **Network Name (SSID)** and **Network Key**.

A-4

When "**Do you want to find PC's, devices, and content on this network, and automatically connect to devices like printers and TVs?**" Select "**Yes**".

If the status of the **W04_XXXXXXXXXX** connection in the **Networks** list is "**Limited**" then settings to this point are complete.

Please continue to the back of this sheet for the next step:

4 Make Connection Settings

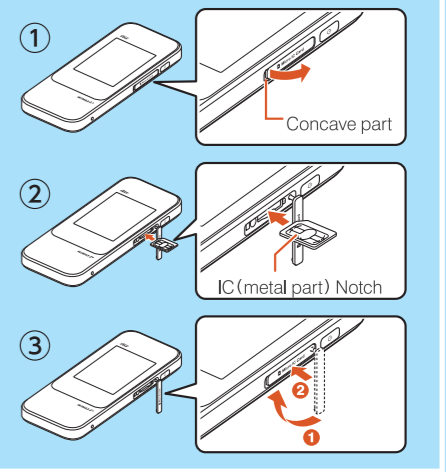
1 Prepare the W04

1. Remove the IC card from the card holder.

As shown in the diagram, remove the au Micro IC card from the card holder.

2. Insert the IC card into the W04.

- Open the IC card slot cover from the indented side on the W04 unit.
- Insert the au Micro IC card, metal-side-up, into the slot until it clicks into position.
- Press the slot cover back into position.



3. After charging the W04, turn it on.

After charging the W04 unit, press and hold the Power button on the device for approximately 3 seconds or longer until the W04 unit turns on.

2 Switch to English Display

① On the W04 unit's Home screen, swipe up, then select the 設定 (Settings) button.

② Next, select the システム設定 (Tools) button.

③ Then, select the 言語 (Language) button.

④ Finally, select the English option, then tap the ✓ icon in the upper, right-hand corner. The W04 unit's display will change to English.

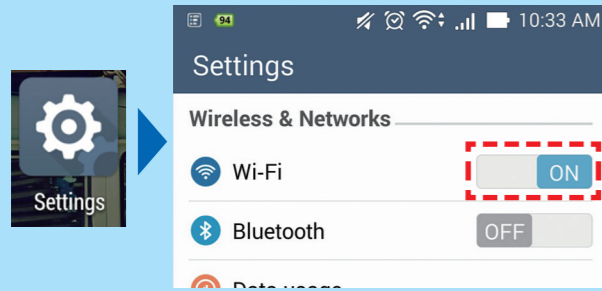
3 Make Wi-Fi Connection to the W04

If using a PC, please see the back of this sheet.

B Tablet or smartphone (Android) Wi-Fi connection method

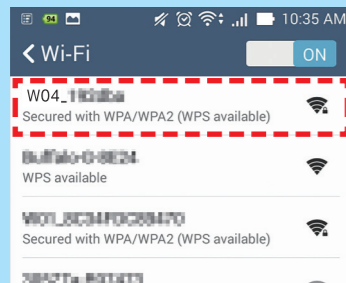
B-1

Choose the **Settings** icon. Under **Wireless & Networks**, turn **Wi-Fi** ON.



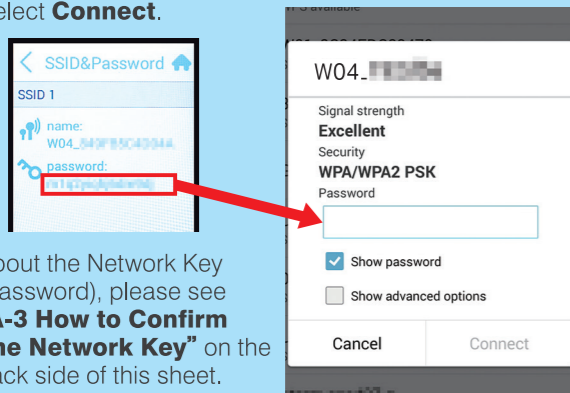
B-2

Select the network name (SSID) starting with **W04_**.



B-3

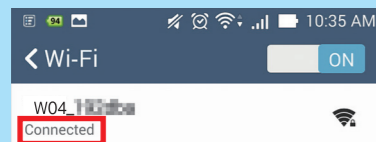
Refer to A-3's "How to Confirm The Network Key" on the back side of this sheet, then enter the **Network Key** in the **Password** field. Select **Connect**.



About the Network Key (password), please see "A-3 How to Confirm The Network Key" on the back side of this sheet.

B-4

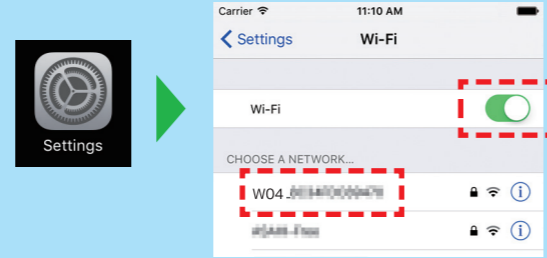
If the status is shown as **Connected**, the connection to the W04 Wi-Fi network is complete.



C iPhone / iPad (iOS) Wi-Fi connection method

C-1

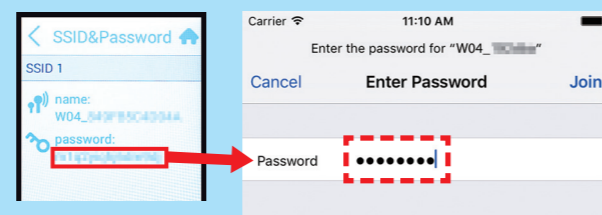
Select the **Settings** icon, then choose **Wi-Fi**. Turn **Wi-Fi** ON, then select the network name (SSID) starting with **W04_**.



C-2

Refer to A-3's "How to Confirm The Network Key" on the back side of this sheet, then enter the **Network Key** in the **Password** field.

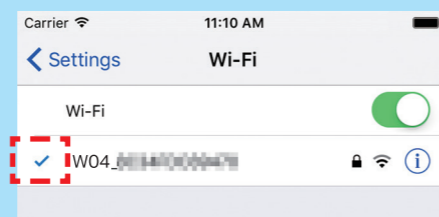
Select **Join**.



About the Network Key (password), please see "A-3 How to Confirm The Network Key" on the back side of this sheet.

C-3

If a **check mark (✓)** appears next to the W04_ network name, the settings are complete.



Please continue to the next step:

4 Make Connection Settings

4 Make Connection Settings

Step 1

Briefly press the W04's Power button.

The time will be displayed.

Swipe up to unlock the W04.



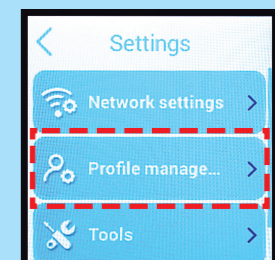
Step 2

On the **Home** screen, swipe up, then select **Settings**.



Step 3

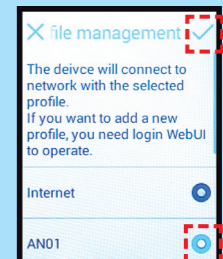
On the **Settings** screen, select **Profile management**.



Step 4

On the **Profile management** screen, select **AN01**(※), then press the **check mark(✓)** in the upper, right-hand corner.

※ If you applied for the Fixed IP Address Option, please select **AN02**.



The settings are now complete.

Should you need assistance, please contact our English support line.

03-6631-0861 10am to 5pm,
Monday through Friday.
For calls from an NTT landline in Japan 0120-577-135

