

# Setup Guide

Speed Wi-Fi NEXT  
**WX01**



## Getting Ready

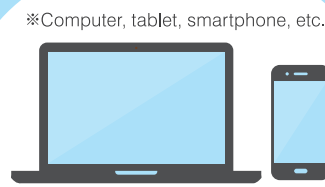
Remove ① and ② from the packaging. Have your own device to hand.



① WX01 main unit

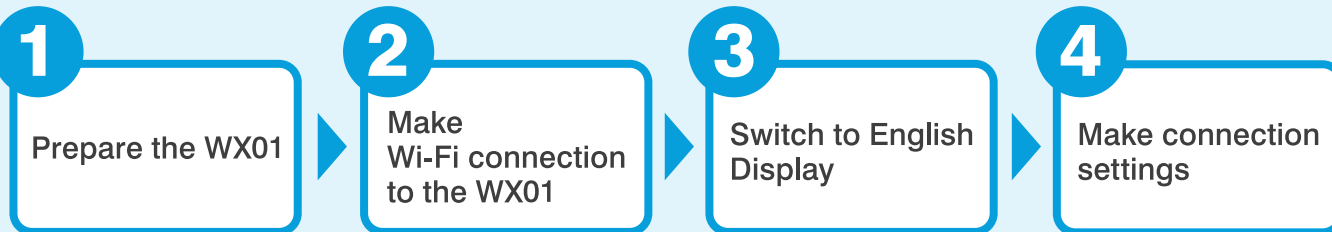


② au Micro IC card



③ Your own device  
(Wi-Fi Capable)

## Steps to making settings



## 2 Make Wi-Fi connection to the WX01

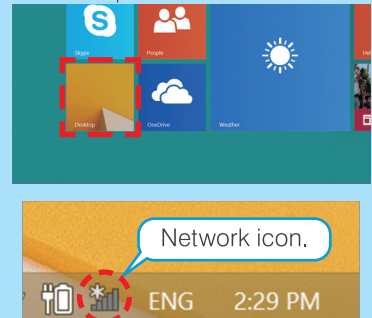
### A PC (Windows 8) Wi-Fi connection method

If using a tablet or smartphone, see the reverse of this sheet.

#### A-1

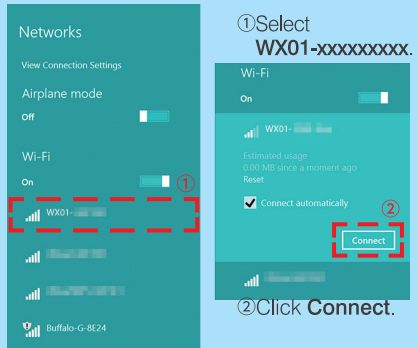
From the **Start** screen, select **Desktop**, and then click the network icon (task tray).

The Desktop shown on the Start screen.



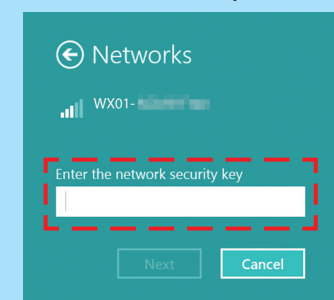
#### A-2

In the **Networks** list, find a name (SSID) starting **WX01**- then click Connect.

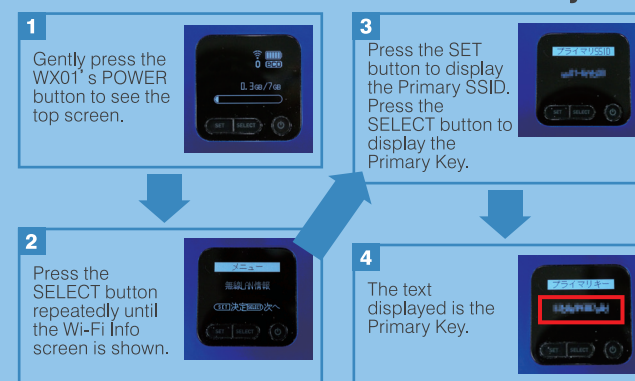


#### A-3

Refer to the right-hand **How To Confirm The Network Key** chart and then, at the **Enter the network security key** prompt, enter the network key. Click **Next**.



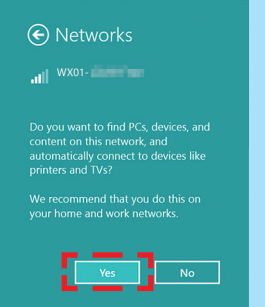
### How To Confirm The Network Key



#### A-4

When asked whether you want to find PCs, devices and content on this network, select **Yes**.

If the status of the **WX01-xxxxxxx** connection in the **Networks** list is **"Limited"** then settings to this point are complete.



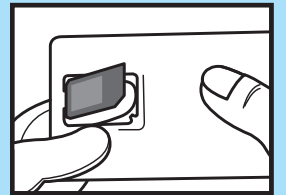
Please continue to the reverse side for

### 3 Switch to English Display

## 1 Prepare the WX01

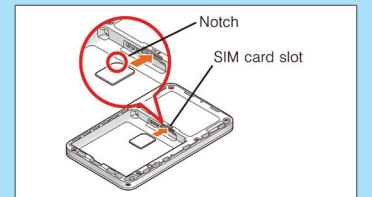
### 1. Remove the IC card from the card holder.

As shown in the diagram, remove the au Micro IC card from the card holder.

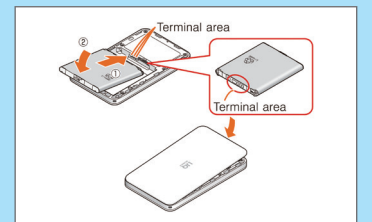


### 2. Insert the IC card into the WX01.

Insert the au Micro IC Card with its metal side down into the IC Card slot until it clicks into position.



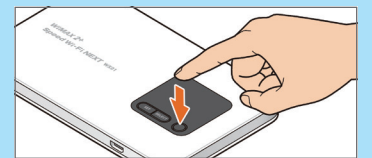
Slide the battery pack with the recycling mark face up into the WX01.



Press the rear cover of the WX01 back on until it clicks into position.

### 3. Charge the WX01, then turn it on.

Charge up the WX01, then hold down its power button for up to 5 seconds until it turns on.



Continue to **2** Make Wi-Fi connection to the WX01

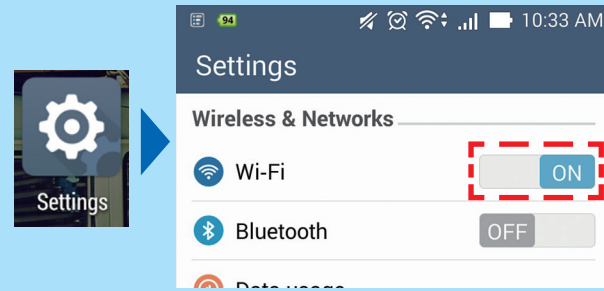
## 2 Make Wi-Fi connection to the WX01

If using a PC, please see the reverse of this sheet.

### B Tablet or smartphone (Android) Wi-Fi connection method

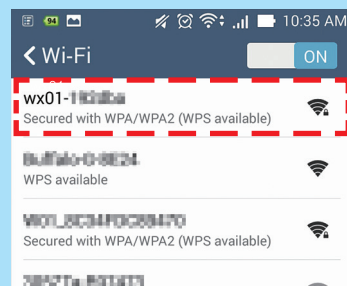
#### B-1

In the **Settings** menu, under **WIRELESS & NETWORKS**, make sure **Wi-Fi** is ON.



#### B-2

Select the network name starting **WX01-**.



#### B-3

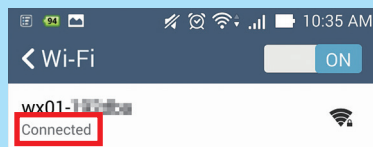
Refer to A-3 **How To Confirm The Network Key** on the reverse side and enter the Network Key in the **Password** field, then tap **Connect**.



Refer to A-3 **How To Confirm The Network Key** on the reverse side for the Network Key (password).

#### B-4

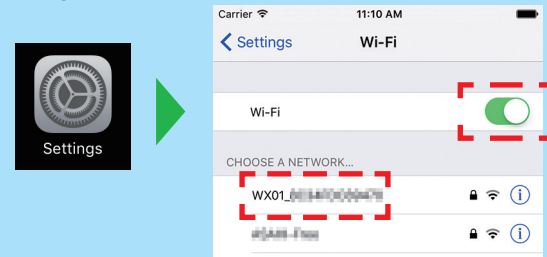
If the status of the **WX01-xxxxxxx** connection is **"Connected"** then settings are complete.



### C iPhone / iPad (iOS) Wi-Fi connection method

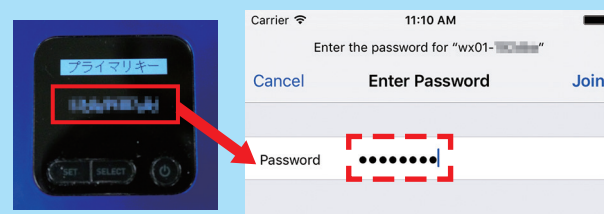
#### C-1

Select the **Settings** icon, and then tap **Wi-Fi**. Turn Wi-Fi ON, and then select the network name starting **WX01-**.



#### C-2

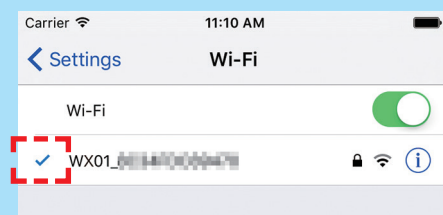
Refer to A-3 **How To Confirm The Network Key** on the reverse side and enter the Network Key in the **Password** field, then tap **Connect**.



Refer to A-3 **How To Confirm The Network Key** on the reverse side for the Network Key (password).

#### C-3

If the **WX01-xxxxxxx** connection has a checkmark beside it then settings are complete.



Please continue to

## 3 Switch to English Display

## 3 Switch to English Display

1. Open a Web browser on the Wi-Fi device (e.g. smartphone) connected to the WX01.
2. Type **http://192.168.179.1** in the address bar of the Web browser and open the page.
3. Tap/Click on the **English** button.
4. Type in a password of your choice in the **パスワード** (Password) and **パスワード再入力** (Re enter) fields. Type the same password in both fields. This will be your administrator password for the WX01 device so please make a note of it so that you don't forget it.
5. Tap/Click the **設定** (Apply) button.
6. Tap/Click on the **English** button.
7. You will be prompted to enter a login Name/User Name and Password. Enter as follows:  
Name/User Name : admin  
Password : The password you created in step 4 above.
8. Tap/Click on the **Advance Settings Top** button.
9. Tap/Click on the **Save** button. This will change the WX01's display to English.

## 4 Make connection settings

#### Step 1

Gently press the WX01's **POWER** button to see the top screen.



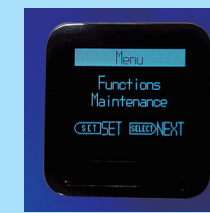
#### Step 5

**Internet** is displayed. Press the **SELECT** button.



#### Step 2

Press the **SELECT** button repeatedly until the **Functions Maintenance** screen is shown.



#### Step 6

**AN01 \*** is displayed. Press the **SET** button.

\* To use a Fixed IP address, select **AN02**.



#### Step 3

Press the **SET** button. **Remote Start** will appear. Press the **SELECT** button.



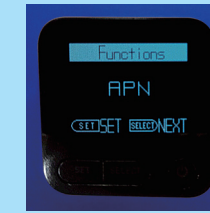
#### Step 7

**Configured** will be displayed.



#### Step 4

**APN** is displayed. Press the **SET** button.



The settings are now complete

Should you need assistance, please contact our English support line.

**03-6631-0861** 10am to 5pm,  
Monday through Friday.  
For calls from a NTT landline in Japan 0120-577-135

