

Connection Settings Guide

Thank you for applying for Asahi Net WiMAX 2+ Service.
To start using WX06, please configure the connection settings by following the steps ① - ③ as shown below.

① Insert an IC card to the router

Referring to STEP ① *Preparing for Setup* in the *Setup Guide*, insert an IC card to the router.

* The Setup Guide included in the box is in Japanese.

The English Setup Guide is available in the following webpage.

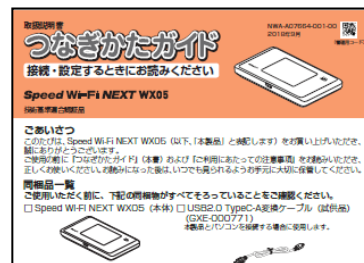
<https://www.necplatforms.co.jp/support/wimax/wx06/manual.html>



② Connect to Wi-Fi

Referring to Step ② *Connecting to Wireless LAN (Wi-Fi)* in the *Setup Guide*, connect your device (smartphones, computers, etc.) and the router with Wi-Fi.

If you wish to connect to Wi-Fi by manual settings, please refer to Step ② *To Do Wireless LAN (Wi-Fi) Connections via Manual Settings* in the *Setup Guide*.



③ Turn on the router and configure APN settings

Referring to the *Steps to Configure APN Settings* on the reverse side of the page, configure APN settings.

Please configure APN settings before you start using the router.

Proceed to the reverse side of the page.

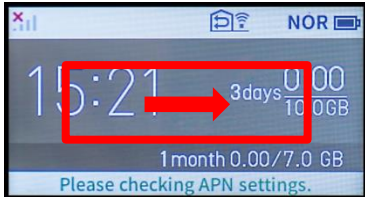
Settings are completed.

Steps to Configure APN Settings

Please configure APN settings before you start using the router.

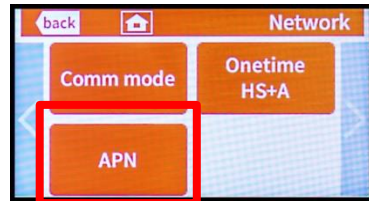
STEP 1

Lightly press the power button of the router, and the locked screen will appear. Slide the Lock mark to unlock.



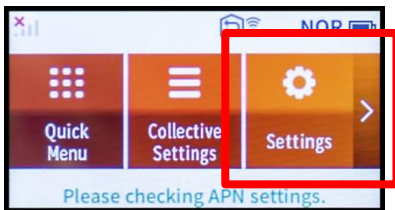
STEP 4

Tap *APN Settings*.



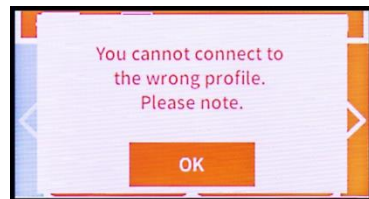
STEP 2

home screen will appear. Tap *Setting*.



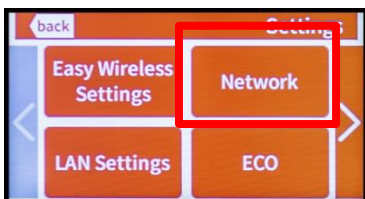
STEP 5

APN Warning screen will appear. Tap *OK*.



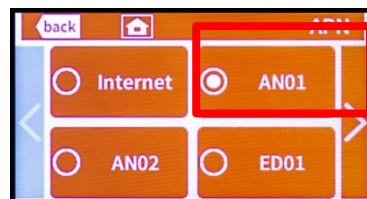
STEP 3

Settings screen will appear. Tap *Network Settings*.



STEP 6

APN Settings screen will appear. Select **AN01***. Wait to return to the *Home* screen.



*If you are using a fixed IP address, select **AN02**.

Settings are completed.



If you have any questions, please contact us below:

Asahi Net English Customer Support

 **0120-577-135**

Open hours: 10 a.m-5 p.m., Monday to Friday, excluding national holidays.